

Nº 179088

Multiscale two-dimensional multiparticle reactor model for non-catalytic gas-solid reactions

**Patricia Metolina
André Luiz Nunis da Silva
Roberto Guardani**

*Trabalho apresentado no CONGRESSO
BRASILEIRO EM ENGENHARIA DE
SISTEMAS EM PROCESSOS, 3., 2024, São
Paulo. **Pôster e Resumo... 2p***

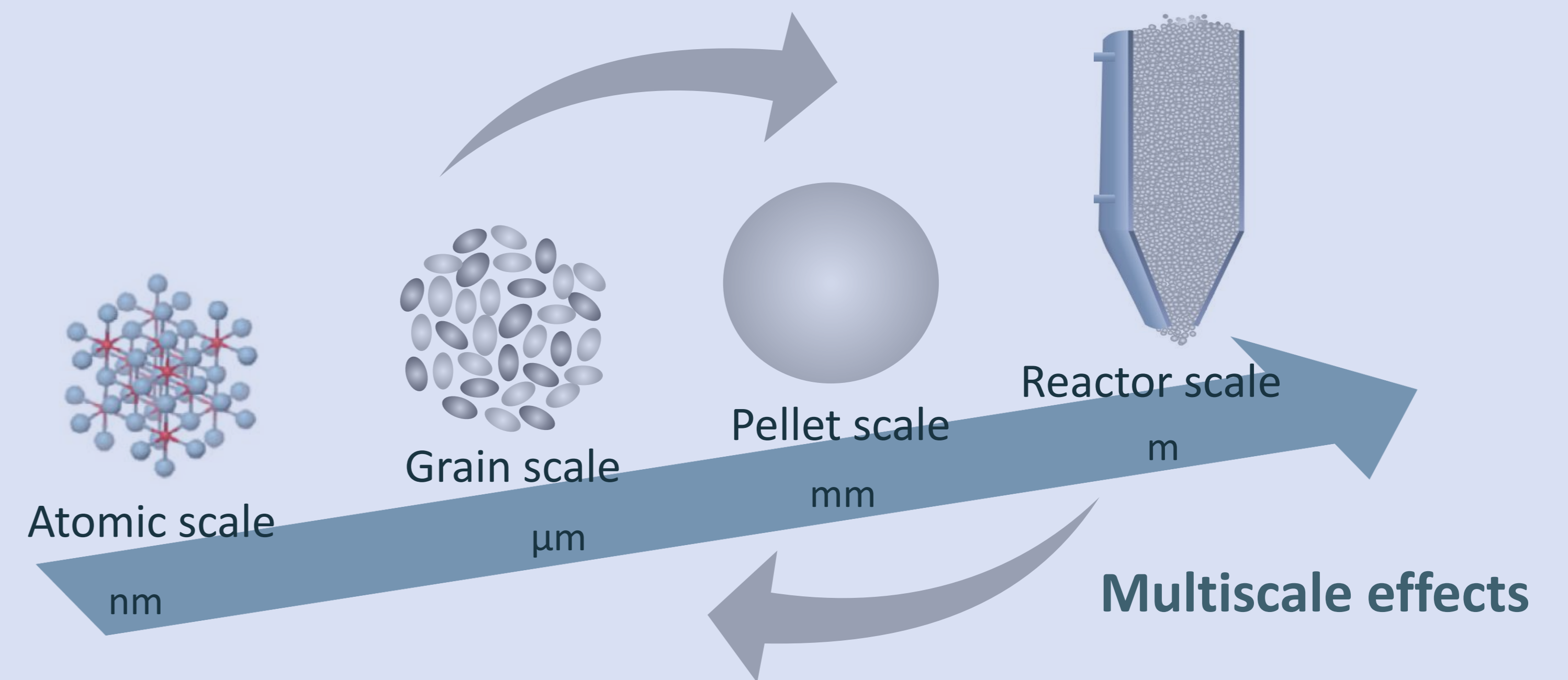
A série “Comunicação Técnica” compreende trabalhos elaborados por técnicos do IPT, apresentados em eventos, publicados em revistas especializadas ou quando seu conteúdo apresentar relevância pública.

PROIBIDO REPRODUÇÃO

INTRODUCTION

Non-catalytic gas solid reactions

- ✓ Complex:
 - changes in the solid structure of the pellet during reactions ^[1]
 - heterogeneity of gas and solid distribution
- ✓ Moving-bed less investigated than fixed-bed reactor ^[2]



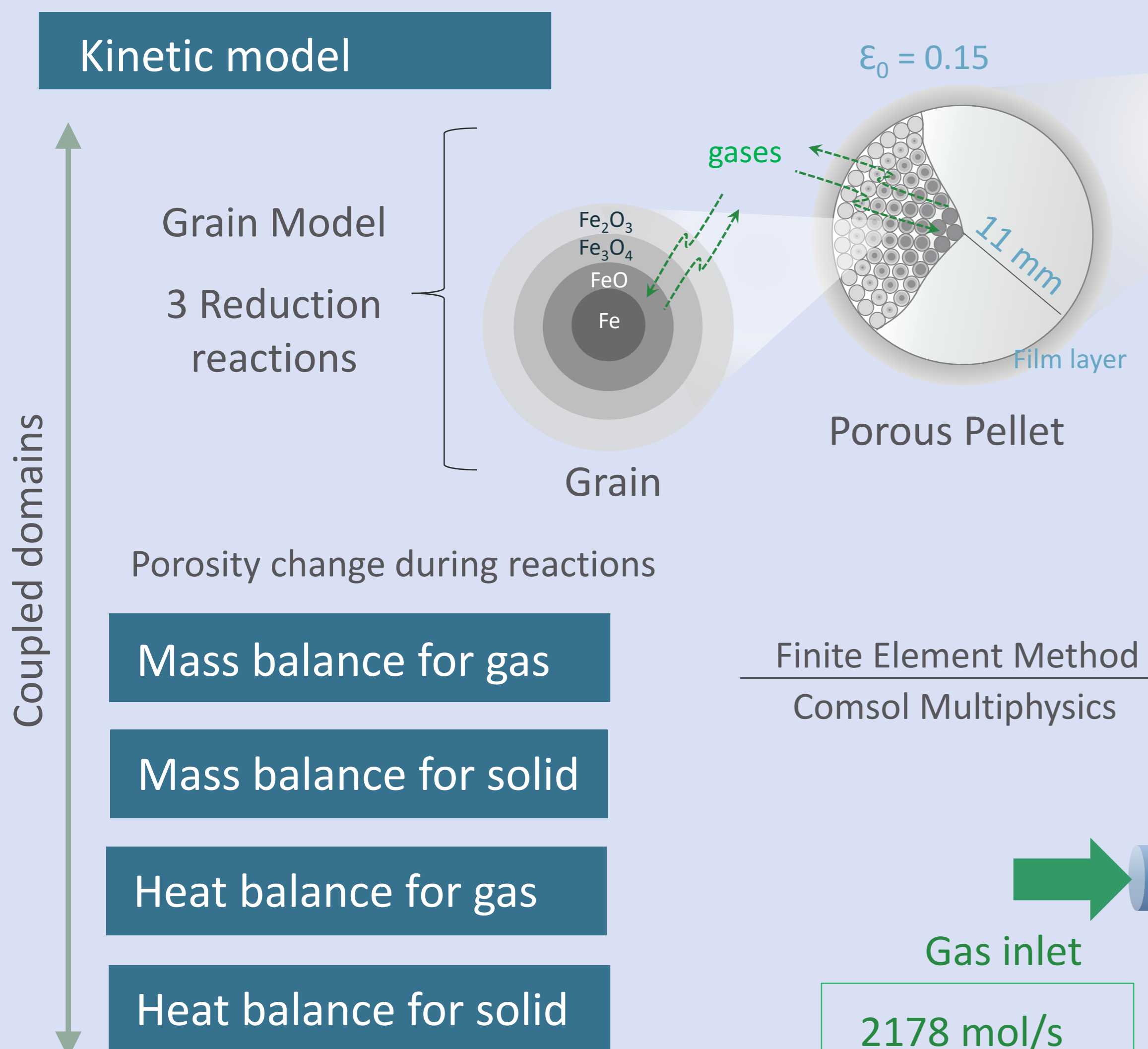
OBJECTIVES

- ✓ Development of a multi-scale mathematical model
- ✓ Heterogeneities of the gas and solid distribution in the reactor and pellet scales

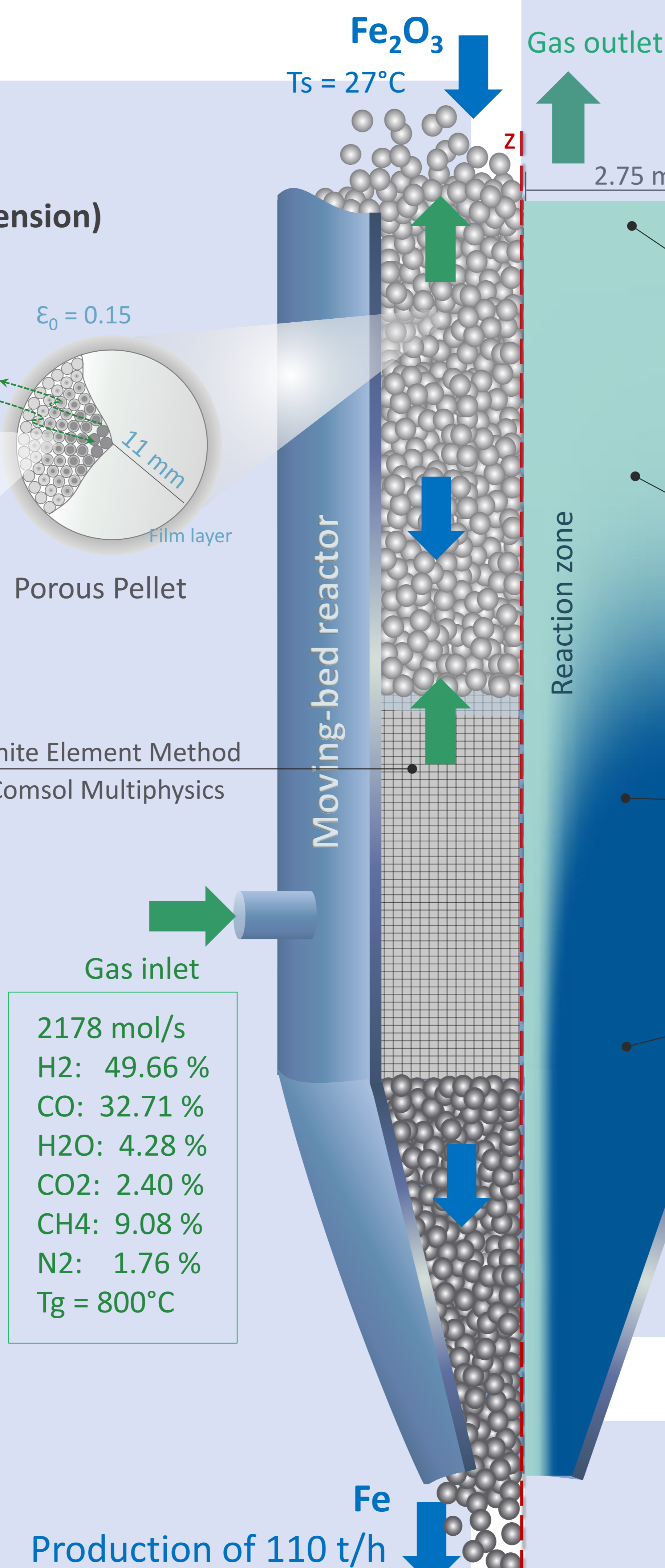
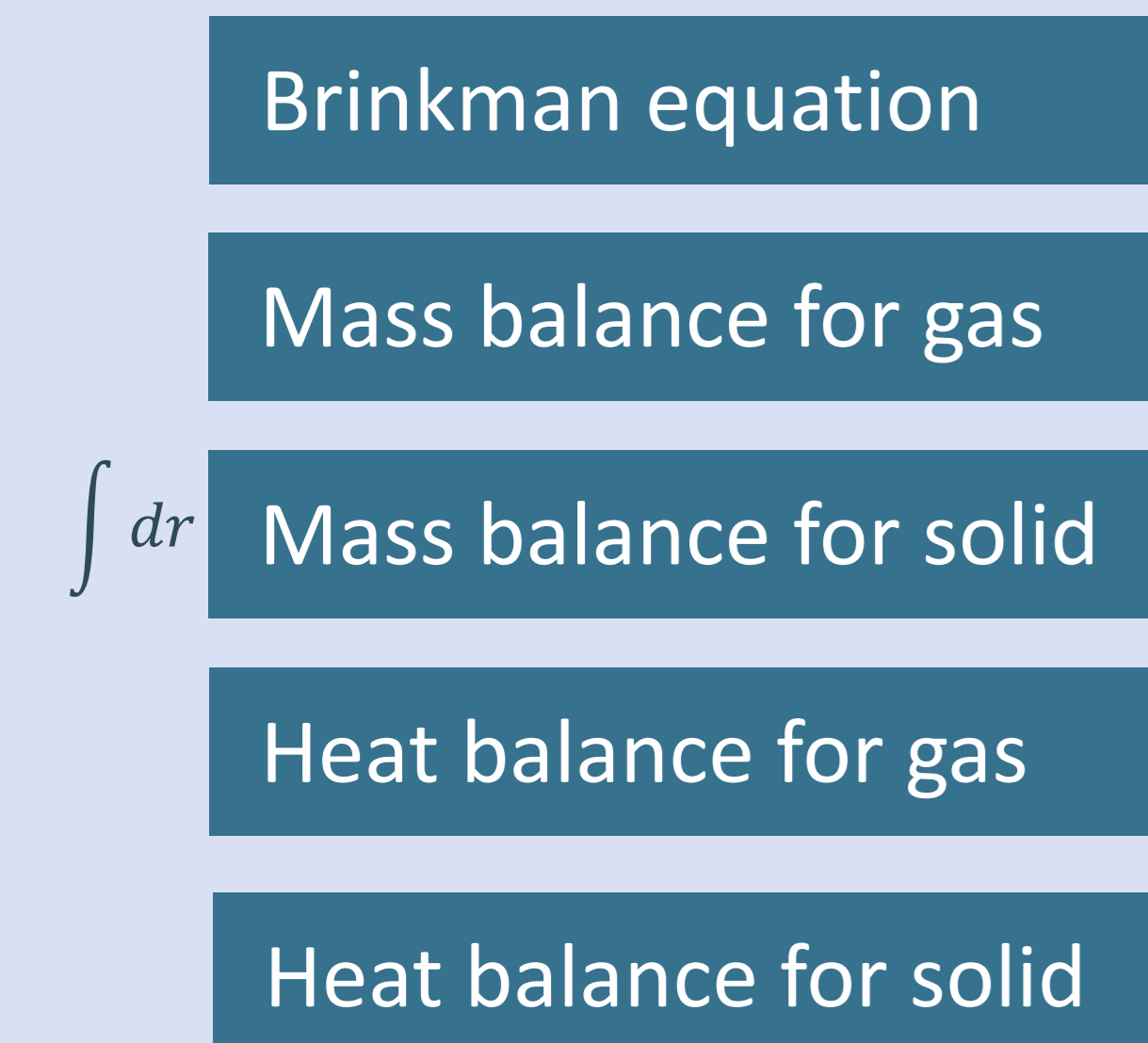
METHODOLOGY

Direct reduction of iron ore

- ✓ Pellet Scale: 1D symmetric (extra dimension)

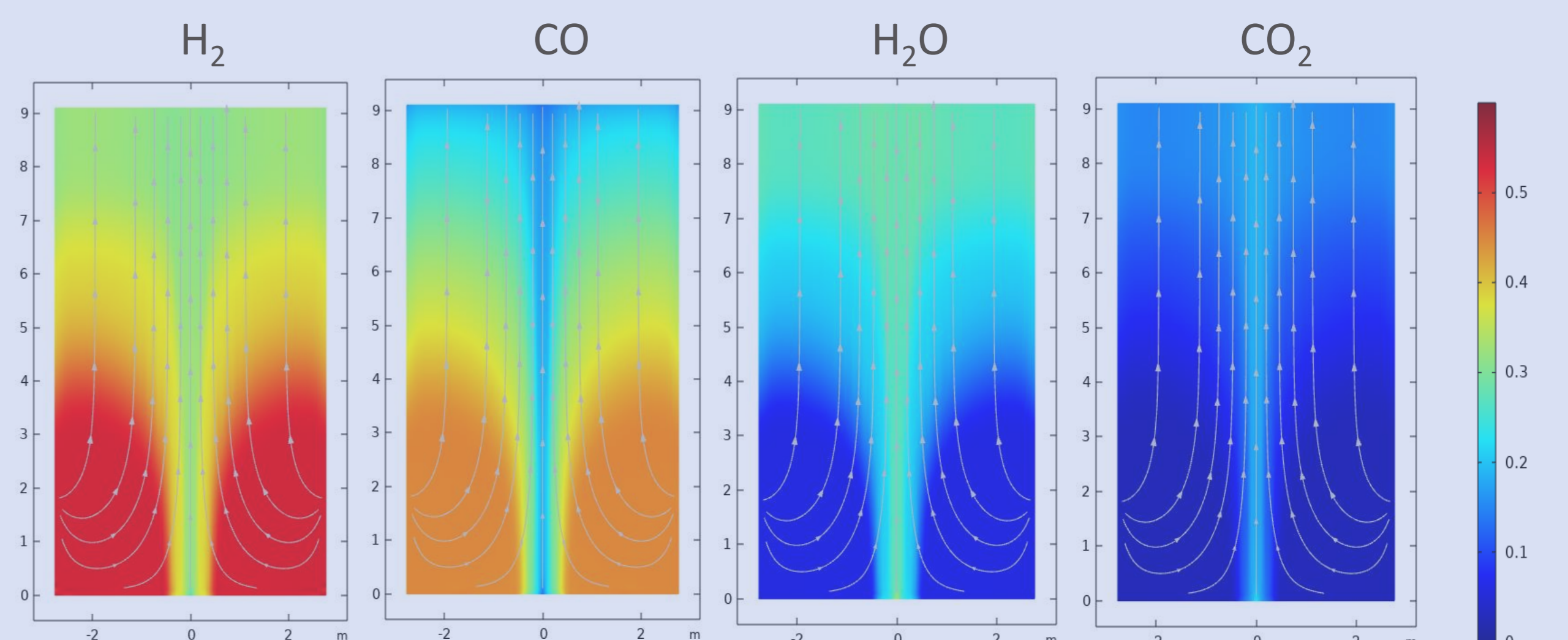


- ✓ Reactor Scale: 2D-axisymmetric

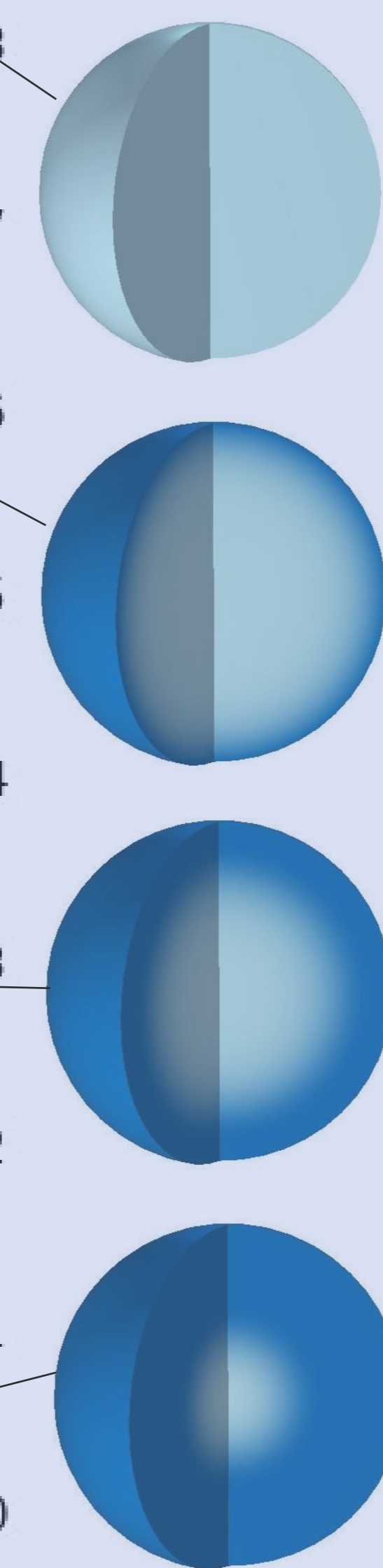


RESULTS AND DISCUSSION

- ✓ Gas molar fraction (Reaction zone)



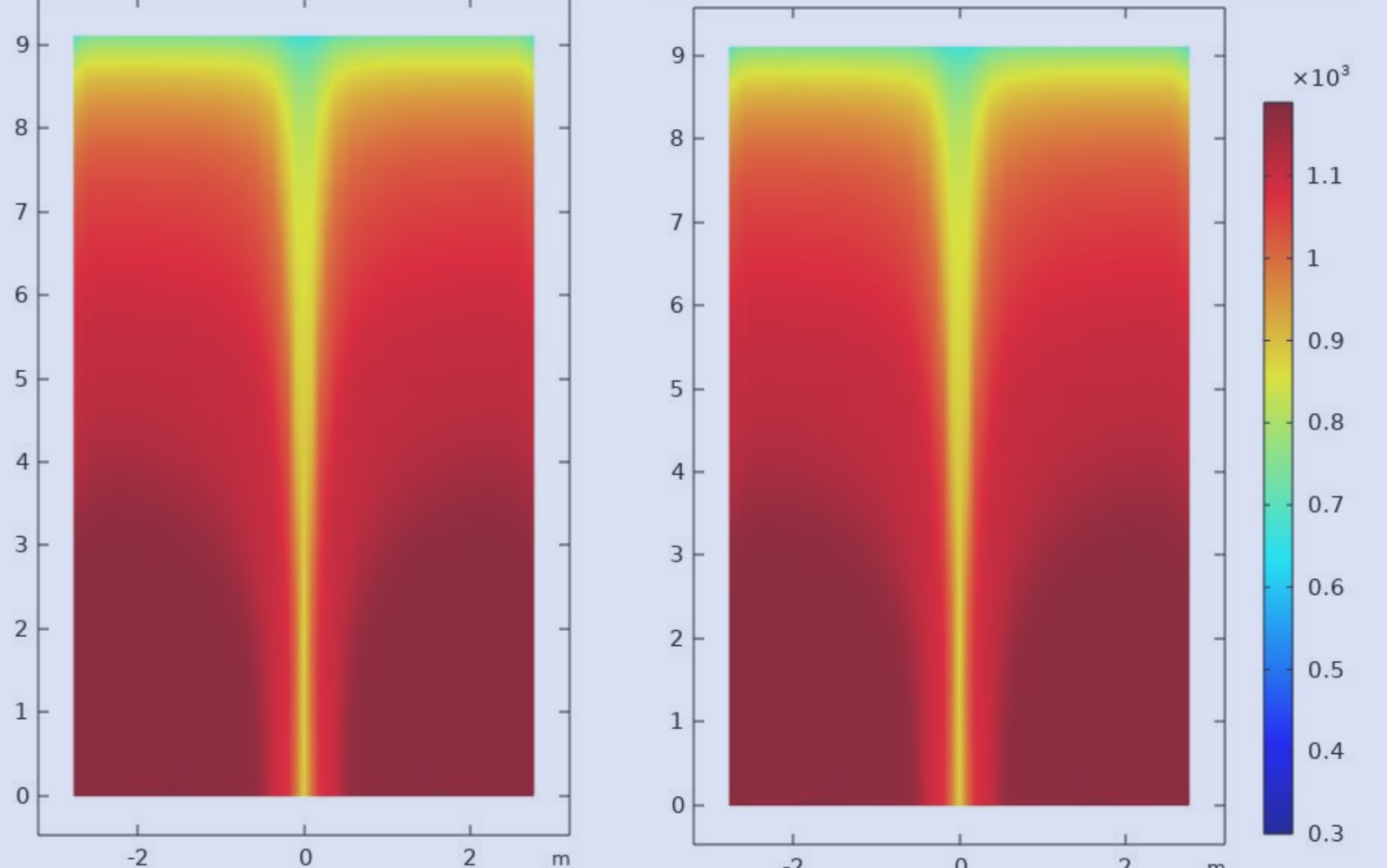
- ✓ Fe molar fraction



(Morabake Midrex Plant, Iran) ^[3]

Parameter	Plant	Model
Outlet gas (%)		
H ₂	32.24	32.11
CO	21.6	21.59
H ₂ O	25.05	27.2
CO ₂	15.46	15.45
CH ₄ + N ₂	3.65	3.65
Solid conversion (%)	94.8	96.5
Temperature (K)	791	760

- ✓ Gas temperature
- ✓ Solid temperature



CONCLUSION

The results provide important multi-scale predictions of the industrial direct reduction process, offering insights to optimize the system at both the reactor and pellet scales.

References:

- [1] Froment, G.F., De Wilde J., Bischoff K.B., 2011. Chemical reactor analysis and design. 3rd ed. Hoboken, N.J: Wiley.
- [2] Rahimi, A., Niksiar, A., 2013. A general model for moving-bed reactors with multiple chemical reactions part I: Model formulation. Int. J. Miner. Process 124, 58–66.
- [3] Nouri S.M.M., Ale Ebrahim H., Jamshidi E., 2011. Simulation of direct reduction reactor by the grain model. Chemical Engineering Journal 166, 704–9.

Multiscale two-dimensional multiparticle reactor model for non-catalytic gas-solid reactions

Patrícia Metolina^{a,b}, André Luiz Nunis da Silva^b, Roberto Guardani^a

^a*Department of Chemical Engineering, Escola Politécnica, University of São Paulo, São Paulo – SP, Brazil*

^b*Laboratory of Metallurgical Processes, Institute for Technological Research, São Paulo – SP, Brazil*

ABSTRACT

Non-catalytic gas-solid reaction systems encompass a range of industrial processes. Among them, the oxidation and reduction of metallic oxides or metals using hydrogen are increasingly applied as environmentally friendly technologies, such as Chemical Looping Hydrogen (CLH) production and Hydrogen Direct Reduction (H-DR) of iron ore (Chang et al., 2023; Zare Ghadi et al. 2020). Despite this, most existing simulations from the literature considerably simplify the transport and reaction phenomena involved at the particle scale (Zare Ghadi et al. 2020). In fact, the complex mathematical equation of such systems is derived from the transient characteristics of the solids that affect the local physical properties during the reaction. In this study, a multiscale model for non-catalytic gas-solid reactions was developed to evaluate the parameters that hierarchically affect process performance. The model considers the mass, heat, and momentum transport equations for the gas flow in a porous medium and the solid particles in counter-current flow, comprising the kinetic model of multiple non-catalytic reactions that occur inside the particles. The reactor and the solid particles are discretized based on the Finite Element Method (FEM), and an extra dimension is used to simulate the particle scale coupled to the reactor scale. The model was validated with industrial data, showing detailed profiles of gas and solid concentration, and temperature along the pellet radius at different reactor positions, as well as solid conversion, gas concentration, and temperature of both phases along the reactor. The multiscale model provides important information on non-catalytic solid reactions, allowing for the optimization of the performance of industrial-scale reactors.

Keywords: Non-catalytic reactions, multiscale simulation, hydrogen, direct reduction, finite element method.

Acknowledgements: The authors express their gratitude to the Fundação de Amparo à Pesquisa do Estado de São Paulo – FAPESP, Brazil [2021/09343-4, 2019/05840-3 and 2017/50348-2 Processes] and Coordenação de Aperfeiçoamento de Pessoal de Nível Superior– CAPES, Brazil [Finance Code 001].

References:

- W. Chang, Y. Hu, W. Xu, C. Huang, H. Chen, J. He, Y. Han, Y. Zhu, X. Ma, X. Wang: *Catalysts* (13), 279, 2023.
- A. Zare Ghadi, M. S. Valipour, S. M. Vahedi, H. Y. Sohn, *steel research int.* (91), 1900270, 2020.